



## Palliative care for children (Pall-ell-tiv)

### What is palliative care?

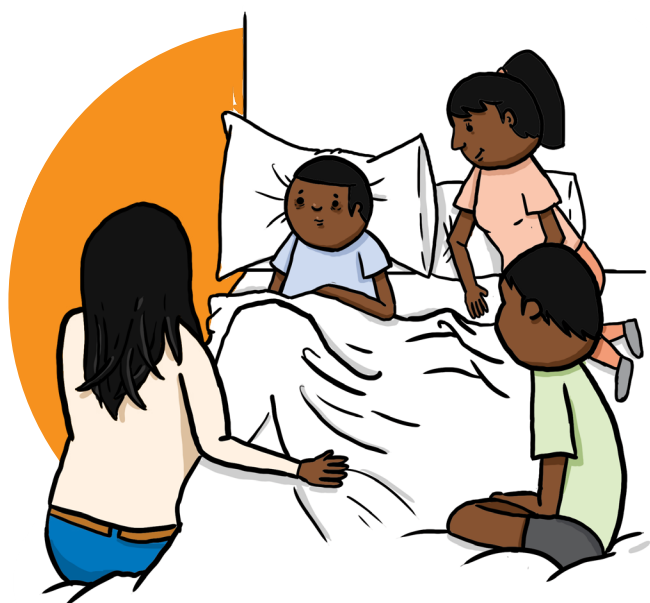
Palliative care is for families and their bubs that are very sick or have an illness that cannot be healed by the medical team.

The medical team will yarn with you about palliative care and what this means for you and your family.

Palliative care is provided by a team of doctors, nurses and allied health staff, like social work and pharmacy, who work alongside bub's medical team and your family.

The team may be able to travel to see you if you live away from Perth.

They work with the doctors and nurses close to home to help them support you and to provide services to help bub live comfortably.



## How can palliative care help?

Palliative care is different for each family. Families can choose where and how they would like support. It can be by phone or in person. Palliative care can visit you at home or in the hospital.



Support can be provided for bub, parents, siblings and extended family, the types of care are:

- To make bub more comfortable with symptoms like pain, breathing difficulties and vomiting.
- Yarning and giving information about the diagnosis, medicines and answering questions.
- Support for bub to be cared for in the best place (such as the home or hospital).
- Links to resources like home help and financial support.
- Referral to respite care in home or out of home, NDIS.
- Help for families to come together to yarn about sensitive/worrying issues.
- Support for emotional, social and spiritual concerns.
- Support for siblings/other children.
- Support to meet cultural obligations.
- Care and support for bub at the end of their life.
- Grief and loss care to the family.

**Yarn with us** or with bub's medical care team to see how palliative care can help.

A referral can be made at any time during bub's illness.

Tel: 6456 0341 or

Email: [pch.palliativecare@health.wa.gov.au](mailto:pch.palliativecare@health.wa.gov.au)



Government of Western Australia  
Child and Adolescent Health Service

### Child and Adolescent Health Service

15 Hospital Avenue, Nedlands, WA, 6009.

Telephone: (08) 6456 2222

Produced by: Palliative Care / Social Work

Ref: 1125.1 © CAHS 2021

This document can be made available in alternative formats on request for a person with a disability.

**Disclaimer:** This publication is for general education and information purposes. Contact a qualified healthcare professional for any medical advice needed.

© State of Western Australia, Child and Adolescent Health Service.