



CLINICAL GUIDELINE

Enteral Feeding: Initiation and Progression

Scope (Staff):	Nursing and Medical Staff
Scope (Area):	NICU KEMH, NICU PCH, NETS WA
Child Safe Organisation Statement of Commitment	
<p>The Child and Adolescent Health Service (CAHS) commits to being a child safe organisation by meeting the National Child Safe Principles and National Child Safe Standards. This is a commitment to a strong culture supported by robust policies and procedures to ensure the safety and wellbeing of children at CAHS.</p>	

This document should be read in conjunction with this [DISCLAIMER](#)

Mothers own breast milk is the preferred feed for infants¹.

For infants of mother’s who choose not to breast feed their infant or can not supply enough milk for their infant then the options include PDHM for those infants who meet the criteria or infant formula. Privately sourced expressed breast milk will not be accepted due to the safety risks associated with this milk^{2,3}.

Preterm infants are to receive their own mother’s breast milk preferably in the order in which it is expressed. This ensures that infants receive the nutritional and immunological benefits of colostrum and early milk. Mothers often produce more milk than is required by their infants in the first few days of life. When this occurs, the surplus early milk is frozen and defrosted and used before fresh milk expressed later in lactation, as early milk has higher protein concentration and evidence suggests freezing milk may reduce or eliminate CMV^{2,3}. Mother’s own fresh milk can be used if frozen milk is not readily available and as breastfeeds are introduced.

Pasteurised Donor Human Milk (PDHM) can be sought for all neonates ≤ 32 weeks gestation and/or ≤ 1500grams when breast milk is unavailable or mothers choose not to breastfeed. Other infants with a risk of feed intolerance will be considered for PDHM on an individual basis by Consultant/SR. Use of PDHM is subject to parental consent. For further information refer to [Perron Rotary Expressed Milk \(PREM\) Bank](#).

Term infants should be offered their first breastfeed within the first few hours after birth if no contraindications.

Enteral feeding should be commenced and gradually increased as early as possible in the presence of clinical stability, according to the following Standardised Enteral Feeding Schedule.⁴⁻⁷

Standardised Enteral Feeding Schedule⁸		
Birth Gestation	Day 1 Of Feeding If EBM Or PDHM Available	Grading Up
< 26 wk	≤ 10 mL/kg/d (i.e. 1-2 mL/kg 4 to 6 hourly) then ≤ 20 mL/kg/d (i.e. 1-2 mL/kg 2 hourly), then progress →	↑ 20-25 mL/kg/d

Enteral Feeding: Initiation and Progression

26 - 31⁺⁶ wk	≤ 20 mL/kg/d (i.e. 1-2 mL/kg 2 hourly), then progress →	↑ 20-25 mL/kg/d
32 - 34⁺⁶ wk	60 mL/kg/day maximum if stable, then progress (initially, a proportion of total fluid given IV may be required →	↑ 30-35 mL/kg/d
≥35 wk	May commence full feeds ± breast feeding if appropriate	

More rapid feed increments are at the discretion of the attending neonatologist⁹⁻¹¹.

Early trophic feeds maintain gut integrity^{12,13} and are encouraged for all infants when EBM or PDHM is available. If unable to grade up feeds, consider trophic feeds of **≤10 mL/kg/d** (i.e. 1-2 mL/kg 4 to 6 hourly).

All infants below 32 weeks gestation are to receive 0.2mL of EBM orally with each feed as available (in addition to ordered feed amount)¹⁴. In women who are unable/choose not to lactate, PDHM (with parental consent) is to be used instead. Infants on continuous milk feeds are to receive 0.2 mL of EBM orally, 2 hourly¹⁴. This is to continue until suck feeds commence.

Withholding of feeds is necessary for Infants who are haemodynamically unstable or unstable with sepsis:

- **Sepsis:** In unstable patients with sepsis, consider withholding feeds until 24 to 48 hours of antibiotic therapy is completed, the blood pressure is stable without inotropes or colloidal support, and respiratory assistance is back to the baseline levels before clinical deterioration occurred.
- **NEC (> Stage II):** Feeds are withheld for a minimum of 7 days.
- **Blood Transfusion:** In infants thought to be at high risk of NEC, consideration may be given to ceasing feeds for 4 hours prior to giving a blood transfusion and to resuming feeds 4 hours after its completion¹⁵. If feeds are ceased, replacement IV fluids may be required.
- **PDA:** Small feeds may be continued during Indomethacin therapy for PDA.

Breast milk is fortified with human milk fortifier¹⁶⁻²⁰ for preterm infants < 35 weeks gestation once breast milk intakes of 100 mL/kg/day are achieved and with term formula for older infants with growth failure.

Breast milk and formula fortified or supplemented with other nutritional products may be required for some preterm and term infants – referral to the dietitian is recommended). Refer to [Milk Room: Breast Milk Fortification and Preterm Formula](#).

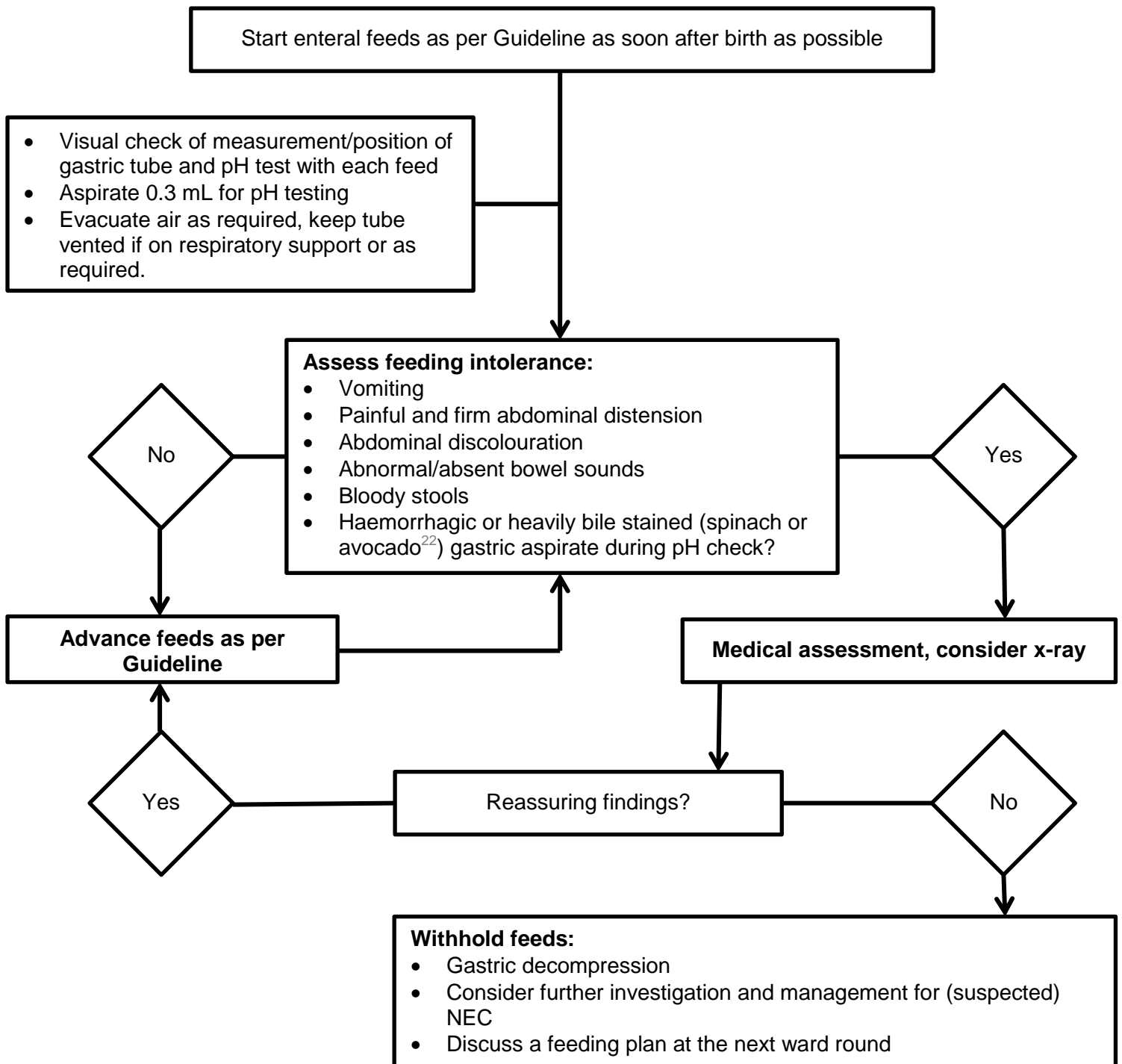
Infant formula is used when mother’s own breast milk and/or PDHM are not options.

When parental permission has been given for formula:

≤34⁺⁶ Weeks	Commence as per above Standardised Feeding Schedule using Term Formula and progress as tolerated. Transition to Preterm Formula when tolerating full oral feeds.
≥35 Weeks	Commence as per above Standardised Feeding Schedule using Term Formula and progress as tolerated.

Formula and modular feeds designed to manage specific medical conditions are available – referral to the Neonatal Dietitian is recommended. Refer to [Milk Room: Breast Milk Fortification and Preterm Formula](#).

Feeding Intolerance Algorithm²¹ is used to assess feeding tolerance without routine checking for gastric residual volumes:



Milk	Lemon	Mustard	Wasabi	Lime	Avocado	Spinach

22

Hypoglycaemia

Refer to [Hypoglycaemia](#) guideline.

Related CAHS internal policies, procedures and guidelines

Neonatology

- [Hypoglycaemia](#)
- [Milk Room: Breast Milk Fortification and Preterm Formula](#)
- [Pasteurised Donor Human Milk \(PDHM\)](#)



References and related external legislation, policies, and guidelines

1. Eidelman AI, RJ S. American Academy of Pediatrics. Policy Statement. Breastfeeding and the Use of Human Milk. *Pediatrics* 2012; 129.
2. Bardanzellu F, Fanos V, Reali A. Human Breast Milk-acquired Cytomegalovirus Infection: Certainties, Doubts and Perspectives. *Curr Pediatr Rev* 2019; **15**(1): 30-41.
3. Friis H, Andersen HK. Rate of inactivation of cytomegalovirus in raw banked milk during storage at -20 degrees C and pasteurisation. *Br Med J (Clin Res Ed)* 1982; **285**: 1604-5.
4. Patole S. Strategies for prevention of feed intolerance in preterm neonates: a systematic review. *The journal of maternal-fetal & neonatal medicine : the official journal of the European Association of Perinatal Medicine, the Federation of Asia and Oceania Perinatal Societies, the International Society of Perinatal Obstet* 2005; **18**(1): 67-76.
5. Patole SK, de Klerk N. Impact of standardised feeding regimens on incidence of neonatal necrotising enterocolitis: a systematic review and meta-analysis of observational studies. *Arch Dis Child Fetal Neonatal Ed* 2005; **90**(2): F147-51.
6. Morgan J, Bombell S, McGuire W. Early trophic feeding versus enteral fasting for very preterm or very low birth weight infants. *Cochrane Database Syst Rev* 2013; **3**: CD000504.
7. Kempley S, Gupta N, Linsell L, et al. Feeding infants below 29 weeks' gestation with abnormal antenatal Doppler: analysis from a randomised trial. *Arch Dis Child Fetal Neonatal Ed* 2014; **99**(1): F6-F11.
8. Jasani B, Patole S. Standardized feeding regimen for reducing necrotizing enterocolitis in preterm infants: an updated systematic review. *J Perinatol* 2017; **37**(7): 827-33.
9. Dorling J, Hewer O, Hurd M, Bari V, Bosiak B, Bowler U, King A, Linsell L, Murray D, Omar O, Partlett C, Rounding C, Townend J, Abbott J, Berrington J, Boyle E, Embleton N, Johnson S, Leaf A, McCormick K, McGuire W, Patel M, Roberts T, Stenson B, Tahir W, Monahan M, Richards J, Rankin J, Juszczak E. Two speeds of increasing milk feeds for very prterm or very low birthweight infants: the SIFT RCT. *Health Technol Assess*. 2020 Apr;**24**(18):1-94. doi: 10.3310/hta24180.
10. Tahir W, Monahan M, Dorling J, Hewer O, Bowler U, Linsell L, Partlett C, Berrington JE, Boyle E, Embleton N, Johnson S, Leaf A, McCormick K, McGuire W, Stenson BJ, Juszczak E, Roberts TE. Economic evaluation alongside the Speed of Increasing milk Feeds Trial (SIFT). *Arch Dis Child Fetal Neonatal Ed*. 2020 Apr **2**:fetalneonatal-2019-318346. doi: 10.1136/archdischild-2019-318346.
11. Oddie SJ, Young L, McGuire W. Slow advancement of enteral feed volumes to prevent necrotising enterocolitis in very low birth weight infants. *Cochrane Database Syst Rev* 2017; **8**: CD001241.
12. Berseth CL. Effect of early feeding on maturation of the preterm infant's small intestine. *J*

Pediatr 1992; 120(6): 947-53.

13. Owens L, Burrin DG, Berseth CL. Minimal enteral feeding induces maturation of intestinal motor function but not mucosal growth in neonatal dogs. J Nutr 2002; 132(9): 2717-22.
14. Muelbert M, Lin L, Bloomfield FH, Harding JE. Exposure to the smell and taste of milk to accelerate feeding in preterm infants. Cochrane Database of Systematic Reviews 2019; (7).
15. Jasani B, Rao S, Patole S. Withholding Feeds and Transfusion-Associated Necrotizing Enterocolitis in Preterm Infants: A Systematic Review. Adv Nutr 2017; 8(5): 764-9.
16. Koletzko B, Poindexter B, Uauy R. Nutritional care of preterm infants. Scientific basis and practical guidelines. Basel, Switzerland: Karger; 2014.
17. Brown JV, Embleton ND, Harding JE, McGuire W. Multi-nutrient fortification of human milk for preterm infants. Cochrane Database Syst Rev 2016; (5): CD000343.
18. Ziegler EE. Meeting the nutritional needs of the low-birth-weight infant. Annals of nutrition & metabolism 2011; 58 Suppl 1: 8-18.
19. Lapillonne A, Bronsky J, Campoy C, et al. Feeding the Late and Moderately Preterm Infant: A Position Paper of the European Society for Paediatric Gastroenterology, Hepatology and Nutrition Committee on Nutrition. J Pediatr Gastroenterol Nutr 2019; 69(2): 259-70.
20. Agostoni C, Buonocore G, Carnielli VP, et al. Enteral nutrient supply for preterm infants: commentary from the European Society of Paediatric Gastroenterology, Hepatology and Nutrition Committee on Nutrition. J Pediatr Gastroenterol Nutr 2010; 50(1): 85-91
21. Newborn Services Clinical Practice Committee. Feeding tolerance algorithm without routine checking for gastric residual volumes. [Starship Child Health Clinical Guideline](#)
22. Newborn Services Clinical Practice Committee. Indicative colour chart for assessing aspirate colour. Bioious aspirates and vomiting – assessment in the neonate. [Starship Child Health Clinical Guideline](#)
23. St-Onge M, Chaudhry S, Koren G. Donated breast milk stored in banks versus breast milk purchased online. Canadian Family Physician 2015; 61(2): 143-146.
<https://www.cfp.ca/content/61/2/143.long>

This document can be made available in alternative formats on request for a person with a disability.

Document Owner:	Neonatology		
Reviewer / Team:	Neonatal Coordinating Group		
Date First Issued:	July 2006	Last Reviewed:	29 th September 2020
Amendment Dates:	29 th January 2021	Next Review Date:	29th September 2023
Approved by:	Neonatal Coordinating Group	Date:	27 th October 2020
Endorsed by:	Neonatal Coordinating Group	Date:	
Standards Applicable:	NSQHS Standards:   Child Safe Standards: 1,10		

Printed or personally saved electronic copies of this document are considered uncontrolled



Healthy kids, healthy communities

Compassion

Excellence

Collaboration

Accountability

Equity

Respect

Neonatology | Community Health | Mental Health | Perth Children’s Hospital