



COVID-19 Weekly Surveillance Report

Table of Contents

Summary for the week 28 March to 3 April 2022 (inclusive)	2
Hospitalisations, ICU admissions and deaths	3
Figure 1. Number of COVID-19 cases admitted to hospital and intensive care unit transfers, and cumulative number of COVID-19 cases, by notification date, 1 January to 3 April 2022.	3
Table 1. Number of COVID-19 related deaths by vaccination status and age group, 28 March to 3 April 2022.	4
Case data	5
Figure 2. COVID-19 cases by notification date and test type, Western Australia, 1 January to 3 April 2022.	5
Figure 3. COVID-19 cases by age group and sex, Western Australia, 28 March to 3 April 2022.	6
Figure 4. 7-day moving average of COVID-19 cases per 100,000 people, by Australian jurisdiction, 1 December 2021 to 3 April 2022.	7
Figure 5. 7-day moving average of COVID-19 cases per 100,000 by age group, Western Australia, 7 February to 3 April 2022.	7
Table 2. Number of COVID-19 cases and case rates per 100,000 population, by region, 28 March to 3 April 2022.	8
Figure 6 (a). Locally-acquired COVID-19 case rates per 100,000 population by LGA, regional Western Australia, 28 March to 3 April 2022. (b) Locally-acquired COVID-19 case rates per 100,000 population by LGA, Perth metropolitan area, 28 March to 3 April 2022.	9
Aboriginal case summary	10
Figure 7. COVID-19 cases in Western Australia per 100,000 population, and rate ratio, by Indigenous status and notification date, 7 February to 3 April 2022.	10
Testing data	11
Figure 8. The number of COVID-19 polymerase chain reaction tests and proportion positive by laboratory category and specimen date, 1 January 2021 to 3 April 2022.....	11
Table 3. Number of COVID-19 polymerase chain reaction tests and testing rates, by region, Western Australia, 28 March to 3 April 2022.....	12
Figure 9 (a). Polymerase chain reaction testing rates per 100,000 population by LGA, regional Western Australia, 28 March to 3 April 2022. (b) Polymerase chain reaction testing rates per 100,000 population by LGA, Perth metropolitan area, 28 March to 3 April 2022.....	13
Appendix 1	14
Regional cases by postcode, 28 March – 3 April 2022	14

Summary for the week 28 March to 3 April 2022 (inclusive)

In the week of 28 March to 3 April 2022 there were:

- 57,195 COVID-19 cases reported (6% increase compared to previous week)
 - 25,746 with positive polymerase chain reaction (PCR) tests (0.2% decrease)
 - 31,449 with positive rapid antigen tests (RAT) (12% increase)
 - 56,198 locally-acquired, 891 interstate acquired, 106 overseas acquired
- 145 hospital admissions (6% decrease) and 7 transfers into an intensive care unit (22% decrease)
- 24 deaths reported (50% increase), aged between 46 to 97 years old
- 116,883 COVID-19 PCR tests conducted (4% decrease).

Surveillance summary

There were 116,883 PCR tests conducted in the current reporting week (week ending 3 April 2022), a 4% decrease compared to the previous reporting week, with test positivity proportion remaining above 25%.

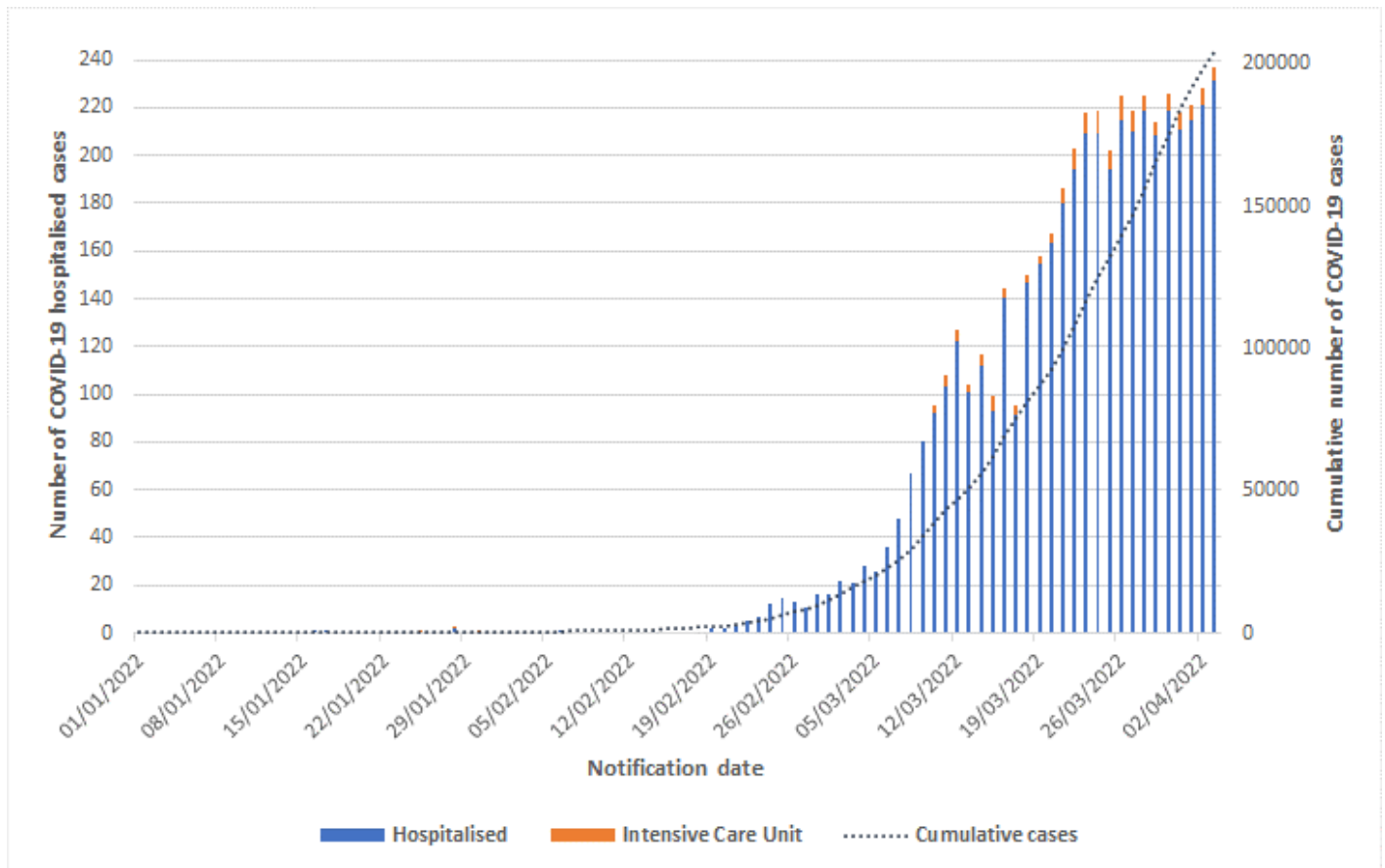
Overall, case numbers increased by 6% compared to the previous week, which was lower than the 30% week-on-week increase observed during the previous 7-day period. However, cases diagnosed by PCR test decreased by 0.2% while there was a 12% increase in cases diagnosed by RAT. While the rate of increase of case numbers appears to have started slowing, it is still too early to determine when the peak will be reached, particularly while the proportion of positive PCR tests remains high.

The largest rate of cases per 100,000 population was observed in the Kimberley region, followed by the Pilbara and Goldfields regions. Cases continue to be predominately reported among age groups less than 40 years old. Compared to other Australian jurisdictions, the rate of cases per 100,000 population in WA remains higher than all apart from Tasmania.

There were 5366 cases and 1 death in the Aboriginal population during the reporting period. Cases in the Aboriginal population continue to be reported at a greater rate compared to the non-Aboriginal population, with the rate ratio remaining around 2.5.

Hospitalisations, ICU admissions and deaths

Figure 1. Number of COVID-19 cases admitted to hospital and intensive care unit transfers, and cumulative number of COVID-19 cases, by notification date, 1 January to 3 April 2022.



Notes
Data sourced from Western Australia Department of Health dataset
Notification date refers to data collected up to the end of the 24-hour reporting period 8pm to 8pm
'Hospitalised' relates to active and cleared COVID-19 cases that are current hospital inpatients. The reason for admission may be unrelated to COVID-19 for some people
'Intensive care unit' (ICU) is a subset of hospitalised and relates to active/cleared COVID-19 cases that are currently in an ICU.

Table 1. Number of COVID-19 related deaths by vaccination status and age group, 28 March to 3 April 2022.

Number of COVID-19 vaccine doses	Deaths n=24
0	4 (16.7%)
1	1 (4.2%)
2	5 (20.8%)
3+	14 (58.3%)
Age group (years)	
0-9	0 (0%)
10-19	0 (0%)
20-29	0 (0%)
30-39	0 (0%)
40-49	1 (4.2%)
50-59	1 (4.2%)
60-69	1 (4.2%)
70-79	6 (25.0%)
80-89	11 (45.8%)
90+	4 (16.6%)

Notes

Data sourced from Western Australia Department of Health dataset

Number of vaccination doses sourced from Australian Immunisation Register. Vaccination data are available for WA residents only, therefore, the number of unvaccinated individuals (0 doses) may be overestimated

Hospitalisation and intensive care unit breakdown available in bi-weekly WA COVID-19 data update. Link [here](#).

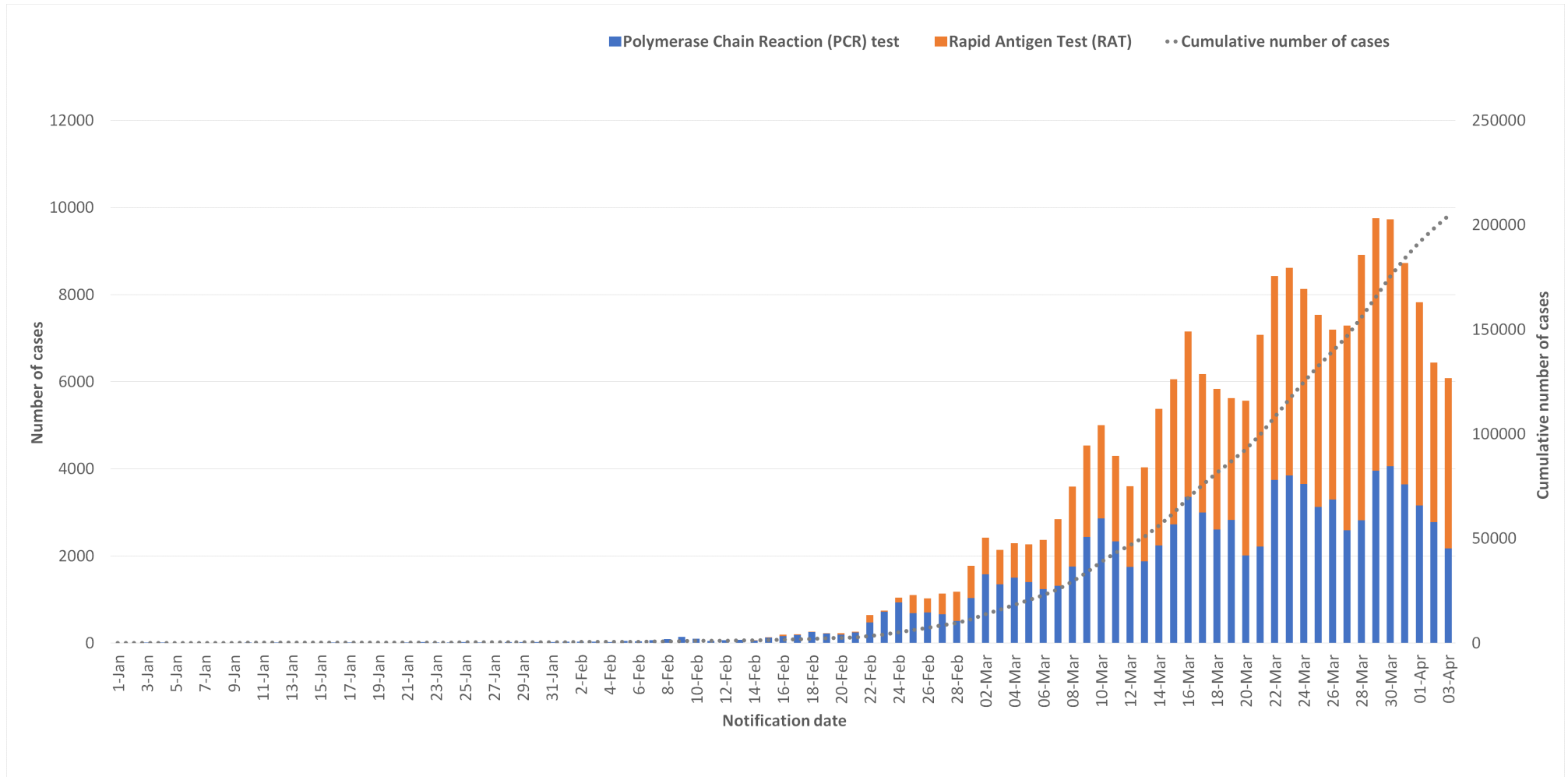
Deaths are counted by notification date and may include historical deaths that occurred (i.e. date of death) prior to the current report week

Notification date refers to data collected up to the end of the 24-hour reporting period 8pm to 8pm

Deaths are not necessarily associated with hospital and/or ICU admissions.

Case data

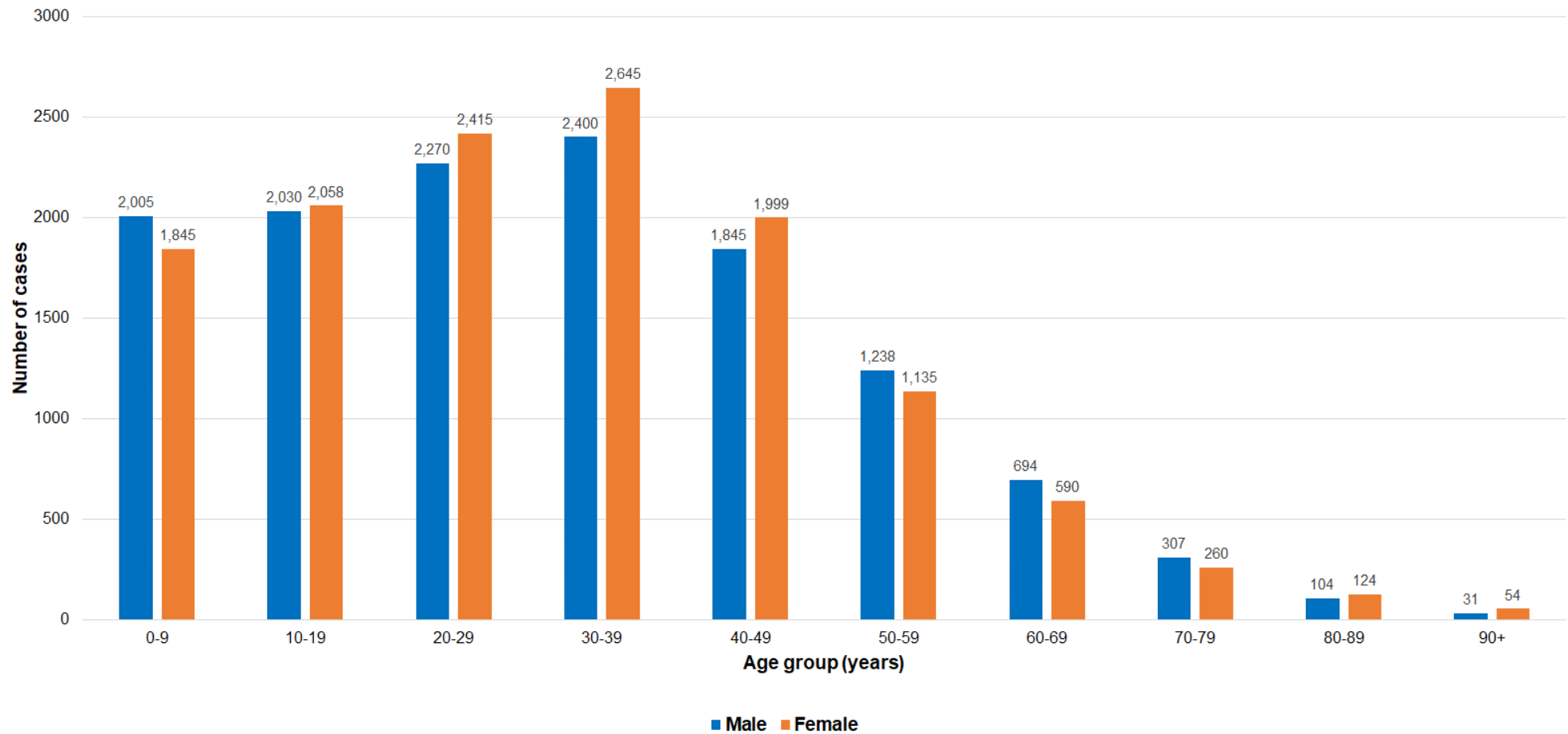
Figure 2. COVID-19 cases by notification date and test type, Western Australia, 1 January to 3 April 2022.



Notes

Data sourced from Western Australia Department of Health dataset
 Notification date refers to data collected up to the end of the 24-hour reporting period 8pm to 8pm.

Figure 3. COVID-19 cases by age group and sex, Western Australia, 28 March to 3 April 2022.



Notes

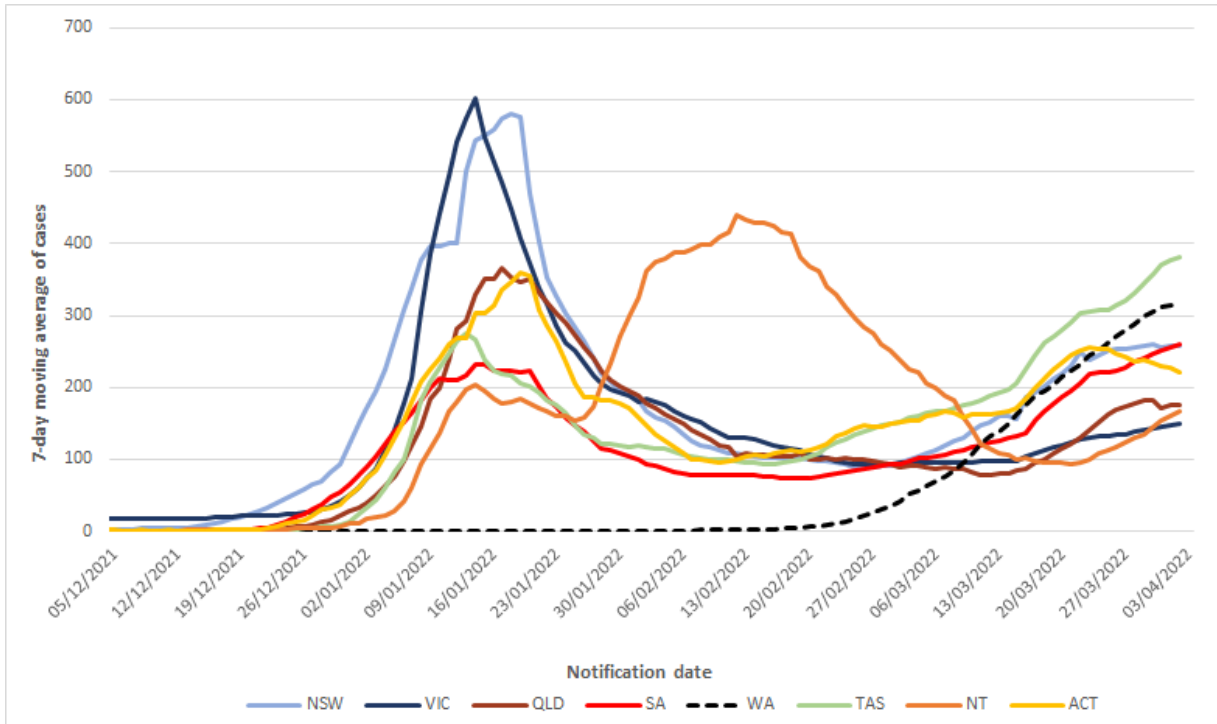
Data sourced from Western Australia Department of Health dataset

Notification date refers to data collected up to the end of the 24-hour reporting period 8pm to 8pm

Gender data is partially incomplete due to the unavailability of this variable during rapid antigen test registration, resulting in a discrepancy to total case numbers reported for the week.

- Males: n=12,824 (49.6%). Females: n=13,125 (50.4%)
- Median age = 29 years; range: 0 to 100 years

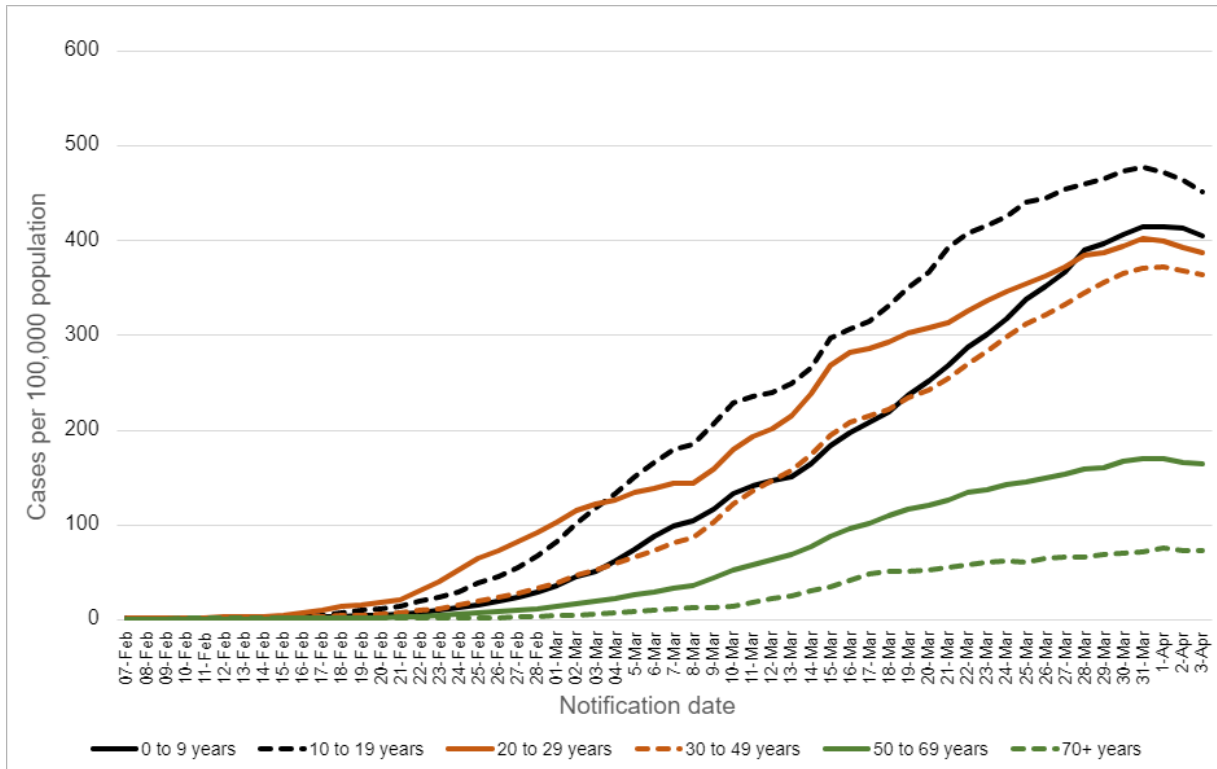
Figure 4. 7-day moving average of COVID-19 cases per 100,000 people, by Australian jurisdiction, 1 December 2021 to 3 April 2022.



Notes

Data sourced from the respective jurisdictional health department datasets
 Notification date refers to data collected up to the end of the 24-hour reporting period 8pm to 8pm
 Population denominator is sourced from Australian Bureau of Statistics June 2021 estimates.

Figure 5. 7-day moving average of COVID-19 cases per 100,000 by age group, Western Australia, 7 February to 3 April 2022.



Notes

Data sourced from Western Australia Department of Health dataset
 Notification date refers to data collected up to the end of the 24-hour reporting period 8pm to 8pm
 Population denominator sourced from Australian Bureau of Statistics June 2021 estimates.

Table 2. Number of COVID-19 cases and case rates per 100,000 population, by region, 28 March to 3 April 2022.

	Region	Week 28 March to 3 April 2022		Week 21 to 27 March 2022	
		Number for current week	Rates for current week (cases/100,000 pop)	Number for previous week	Rates for previous week (cases/100,000 pop)
WACHS Regions	Goldfields	1243	2032	907	1483
	Great Southern	900	1412	943	1479
	Kimberley	1740	4283	934	2299
	Midwest	1054	1480	826	1159
	Pilbara	1874	2663	1740	2473
	South West	2573	1313	1806	922
	Wheatbelt	776	975	785	987
WACHS total*		10,160	1744	7941	1363
Other**		1920	-	1776	-
Metropolitan		45,115	1968	44,178	1927
Total		57,195	1922	53,895	1813

Notes

Data sourced from Western Australia Department of Health dataset

Notification date refers to data collected up to the end of the 24-hour reporting period 8pm to 8pm

Cases include all cases whose source of infection is classified as 'locally-acquired', 'interstate-acquired', 'overseas-acquired' and 'source under investigation'

Case data is by place of usual residence for positive case (due to unavailability of data for specific location of acquisition)

Case data includes those determined by both polymerase chain reaction (PCR) tests and rapid antigen tests (RAT)

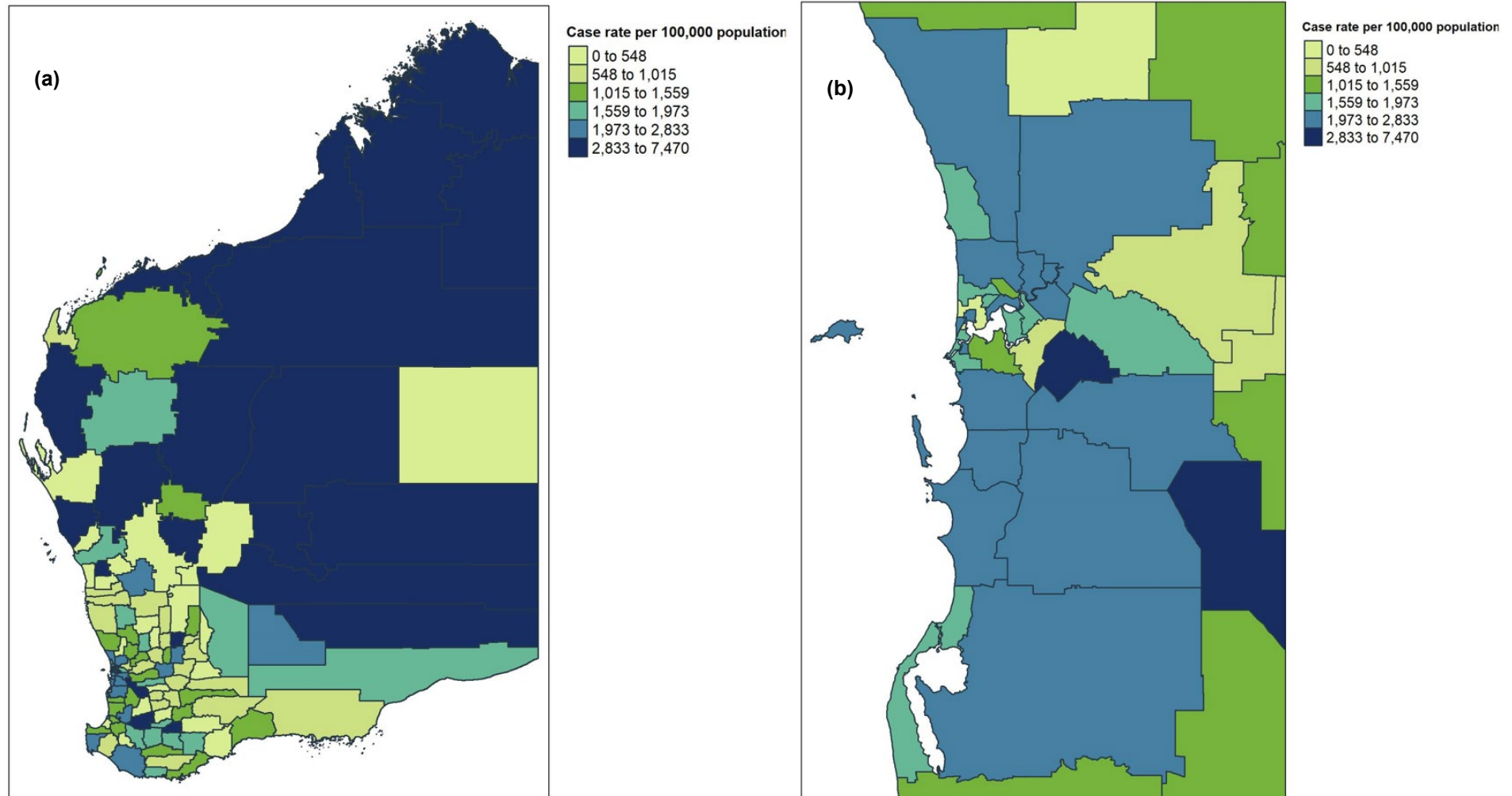
*Western Australia Country Health Service (WACHS) includes Goldfields, Great Southern, Kimberley, Midwest, Pilbara, South West and Wheatbelt public health regions

Total excludes WACHS*

**Other includes overseas and interstate residential addresses, and cases whom had no residential data available

Population denominator is sourced from Australian Bureau of Statistics 2019 estimates.

Figure 6 (a). Locally-acquired COVID-19 case rates per 100,000 population by LGA, regional Western Australia, 28 March to 3 April 2022. (b) Locally-acquired COVID-19 case rates per 100,000 population by LGA, Perth metropolitan area, 28 March to 3 April 2022.

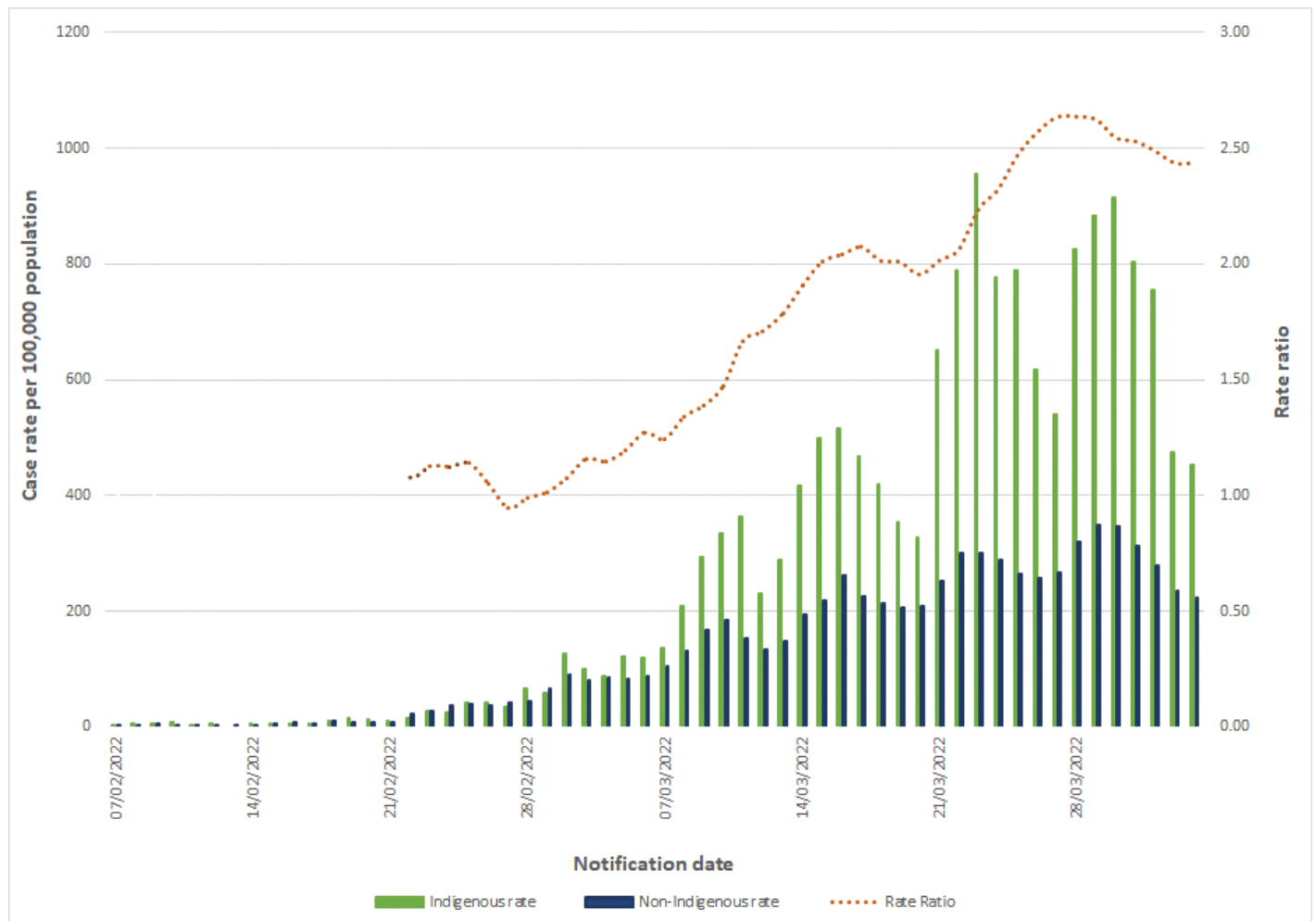


Notes

Data sourced from Western Australia Department of Health dataset
 Notification date refers to data collected up to the end of the 24-hour reporting period 8pm to 8pm
 'Locally-acquired' cases include all cases whose source of infection is classified as 'locally-acquired' and 'source under investigation' only (excludes interstate and overseas-acquired cases)
 Case data is represented on the map by place of usual residence for positive case (due to unavailability of data for specific location of acquisition)
 Case data includes those determined by both polymerase chain reaction (PCR) tests and rapid antigen tests (RAT)
 Areas on the map are defined by Local Government Area (LGA) boundaries
 Population denominator is sourced from Australian Bureau of Statistics 2019 estimates.

Aboriginal case summary

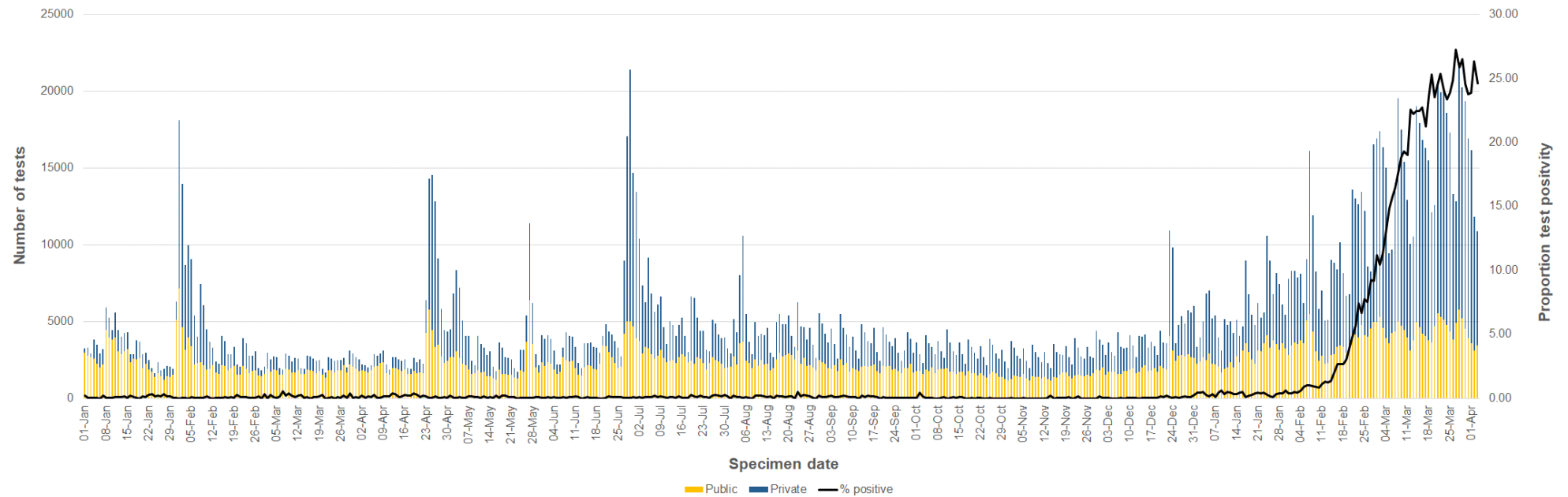
Figure 7. COVID-19 cases in Western Australia per 100,000 population, and rate ratio, by Indigenous status and notification date, 7 February to 3 April 2022.



Notes
 Data sourced from Western Australia Department of Health dataset
 Notification date refers to data collected up to the end of the 24-hour reporting period 8pm to 8pm
 Indigenous status is defined as those who identify as 'Aboriginal and Torres Strait Islander origin'/'Aboriginal but not TSI origin'/'TSI but not Aboriginal origin'
 Cases where Indigenous status was not stated were designated as non-Indigenous
 Cases include those determined by both polymerase chain reaction (PCR) tests and rapid antigen tests (RAT)
 Population denominator is sourced from Australian Bureau of Statistics 2019 estimates
 Rate ratio is calculated as Indigenous rate/Non-Indigenous rate, with a 7-day average of the respective rate ratios applied to smooth the trend
 Rate ratio is only plotted from 22nd February 2022 onwards due to there being too few case numbers prior to this date.

Testing data

Figure 8. The number of COVID-19 polymerase chain reaction tests and proportion positive by laboratory category and specimen date, 1 January 2021 to 3 April 2022.



Notes

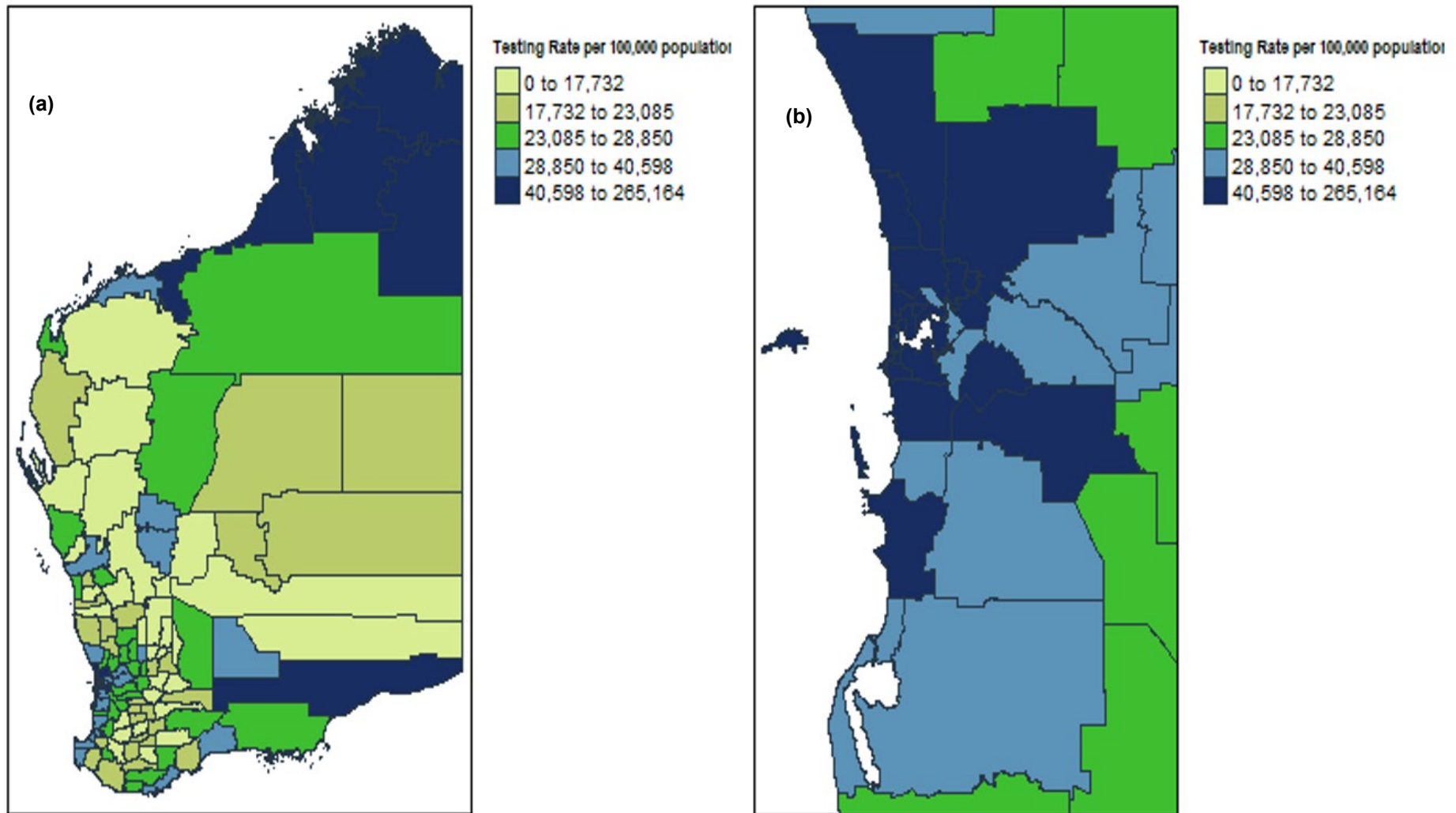
Data sourced from Western Australian public and private pathology laboratories
 Specimen date refers to the date that specimen was collected
 Number of tests includes both positive and negative tests.

Table 3. Number of COVID-19 polymerase chain reaction tests and testing rates, by region, Western Australia, 28 March to 3 April 2022.

	Region	Week 28 March to 3 April 2022		Week 21 to 27 March 2022	
		Number for week	Rates for week (tests/100,000 pop)	Number for previous week	Rates for previous week (tests/100,000 pop)
WACHS Regions	Goldfields	774	1266	811	1326
	Great Southern	895	1404	1001	1570
	Kimberley	2065	5083	2081	5123
	Midwest	873	1225	843	1183
	Pilbara	1704	2422	1983	2818
	South West	5018	2561	4264	2177
	Wheatbelt	1263	1588	1274	1601
WACHS total *		12,592	2161	12,257	2104
Other**		1937	-	1963	-
Metropolitan		102,578	4474	108,220	4720
Total		117,107	4073	122,440	4258

Notes
 Data sourced from Western Australian public and private pathology laboratories
 Number of tests includes both positive and negative tests
 Region of residential address for person tested
 *Western Australia Country Health Service (WACHS) includes Goldfields, Great Southern, Kimberley, Midwest, Pilbara, South West and Wheatbelt public health regions
 Total excludes WACHS*
 **Other includes overseas and interstate residential addresses
 Population denominator is sourced from Australian Bureau of Statistics 2019 estimates.

Figure 9 (a). Polymerase chain reaction testing rates per 100,000 population by LGA, regional Western Australia, 28 March to 3 April 2022. (b) Polymerase chain reaction testing rates per 100,000 population by LGA, Perth metropolitan area, 28 March to 3 April 2022.



Notes

Data sourced from Western Australian pathology laboratories and includes both positive and negative tests
 RAT testing numbers could not be included due to the department only receiving positive RAT tests
 Population denominator is sourced from Australian Bureau of Statistics 2019 estimates
 Testing data is represented on the map by place of usual residence for person tested (due to unavailability of data for place of test)
 Areas on the map are defined by Local Government Area (LGA) boundaries.

Appendix 1

Regional cases by postcode, 28 March – 3 April 2022

WACHS Regions	Postcode	Week 28 March to 3 April 2022	WACHS Regions	Postcode	Week 28 March to 3 April 2022	WACHS Regions	Postcode	Week 28 March to 3 April 2022
Goldfields	872	21	Great Southern (continued)	6395	34	Pilbara	6710	15
	6346	5		6396	<5		6712	<5
	6429	36		6397	<5		6713	17
	6430	639	Kimberley	6725	635		6714	568
	6431	13		6726	132		6716	9
	6432	198		6728	255		6718	25
	6434	<5		6740	11		6720	72
	6436	15		6743	390		6721	202
	6437	15		6765	63		6722	504
	6438	35		6770	251		6751	128
	6440	76		6798	<5		6753	240
	6442	32	Midwest	6514	<5		6754	19
	6443	13		6515	6		6758	<5
	6445	<5		6517	<5		6760	47
	6448	6		6518	<5		6762	10
	6450	103		6519	<5	South West	6218	18
	6646	30		6522	15		6219	<5
	Great Southern	6316	5	6525	10		6220	129
6317		189	6528	<5	6221		<5	
6318		10	6530	556	6223		6	
6320		9	6532	63	6224		15	
6321		6	6535	19	6225		177	
6322		<5	6536	45	6226		<5	
6323		6	6537	<5	6227		6	
6324		45	6620	<5	6228		<5	
6326		<5	6623	15	6229	<5		
6327		5	6625	<5	6230	554		
6328		6	6630	42	6232	178		
6330		433	6632	<5	6233	249		
6333		106	6635	7	6236	16		
6335		10	6638	25	6237	27		
6336		<5	6640	<5	6239	64		
6337		8	6642	52	6244	7		
6338		11	6701	149	6251	<5		
6348		<5	6705	5	6252	<5		
6394	<5	6707	23	6254	<5			

WACHS Regions	Postcode	Week 28 March to 3 April 2022	WACHS Regions	Postcode	Week 28 March to 3 April 2022	WACHS Regions	Postcode	Week 28 March to 3 April 2022	
South West (continued)	6255	27	Wheatbelt (continued)	6358	<5	Wheatbelt (continued)	6479	7	
	6256	<5		6359	<5		6484	<5	
	6258	170		6365	10		6485	<5	
	6260	6		6367	<5		6488	8	
	6262	<5		6369	<5		6489	<5	
	6271	26		6370	<5		6490	<5	
	6275	14		6375	8		6501	17	
	6280	362		6383	20		6502	11	
	6281	139		6386	6		6503	45	
	6282	22		6390	10		6505	<5	
	6284	42		6391	10		6506	<5	
	6285	254		6392	<5		6507	<5	
	6286	15		6393	6		6509	6	
	6288	5		6401	85		6510	35	
	6290	14		6405	5		6511	<5	
	6398	<5		6407	6		6513	<5	
	Wheatbelt	6041		19	6409		5	6516	12
		6042		<5	6410		25	6521	8
6043		<5	6411	<5	6560	26			
6044		6	6412	<5	6562	18			
6302		22	6414	<5	6564	<5			
6304		18	6415	21	6566	41			
6306		16	6418	<5	6567	7			
6308		26	6421	<5	6569	<5			
6309		<5	6422	<5	6571	<5			
6311		7	6425	<5	6574	<5			
6312		30	6426	17	6575	<5			
6313		<5	6460	7	6603	10			
6315		37	6461	<5	6605	<5			
6350		<5	6467	<5	6606	<5			
6351		<5	6468	5	6608	<5			
6352		<5	6472	<5	6609	5			
6353		<5	6475	<5	6613	<5			
6355		7	6476	<5					

Notes

Data sourced from Western Australia Department of Health dataset

Exact number of cases less than 5 not reported for confidentiality

Notification date refers to data collected up to the end of the 24-hour reporting period 8pm to 8pm

Cases include all cases whose source of infection is classified as 'locally-acquired', 'interstate-acquired', 'overseas-acquired' and 'source under investigation'

Case data is based on the residential postcode of each case. The case may have an isolation address based in another regional postcode.

Case data includes those determined by both polymerase chain reaction (PCR) tests and rapid antigen tests (RAT)

*Western Australia Country Health Service (WACHS) includes Goldfields, Great Southern, Kimberley, Midwest, Pilbara, South West and Wheatbelt public health regions

This document can be made available in alternative formats on request for a person with disability.

© Department of Health 2022

Copyright to this material is vested in the State of Western Australia unless otherwise indicated. Apart from any fair dealing for the purposes of private study, research, criticism or review, as permitted under the provisions of the *Copyright Act 1968*, no part may be reproduced or re-used for any purposes whatsoever without written permission of the State of Western Australia.

health.wa.gov.au