

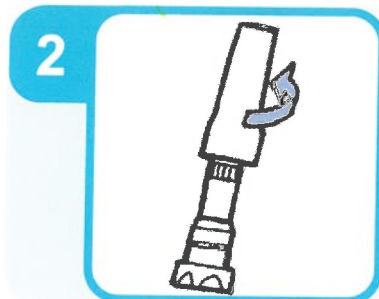
TOBI[®] Podhaler[®] tobramycin capsules for inhalation

Your doctor has prescribed you TOBI Podhaler. Tobi Podhaler capsules for inhalation contain a medicine called tobramycin in a powdered form. The powder from the capsule is inhaled (breathed into the lungs) using the TOBI Podhaler inhalation device provided with the medicine.

USE A NEW PODHALER INHALATION DEVICE EVERY WEEK



1 Wash and fully dry hands.



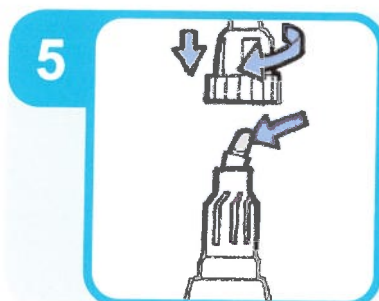
2 Just before use, remove the Podhaler from its case by holding the base and twisting off the top of the case in a counter-clockwise direction. Set the top of the case aside. Briefly inspect the inhaler to make sure it is clean and not damaged, then stand it in the base of the case.



3 Holding the body of the inhaler, unscrew and remove the mouthpiece from the inhaler body. Set the mouthpiece aside on a clean, dry surface.



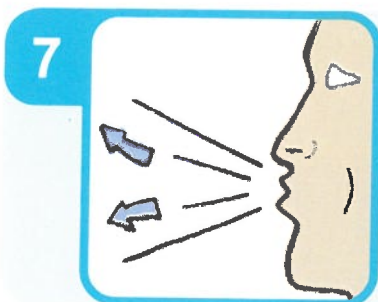
4 Separate the morning and evening doses from the capsule card. Peel back the foil from the capsule card to reveal one capsule and remove it from the card.



5 Immediately insert the capsule into the inhaler chamber. Replace the mouthpiece and screw it on firmly until it stops. Do not over tighten.



6 To puncture the capsule, hold the inhaler with the mouthpiece down, press the button down firmly with your thumb, as far as it will go, and then release the button. The medication is now ready for inhalation.



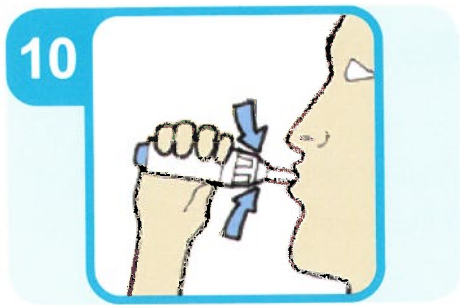
7 Fully exhale away from the inhaler.



8 Position the inhaler with the mouthpiece facing towards you. Place mouth over the mouthpiece creating a tight seal. Inhale the powder deeply with a single continuous inhalation.



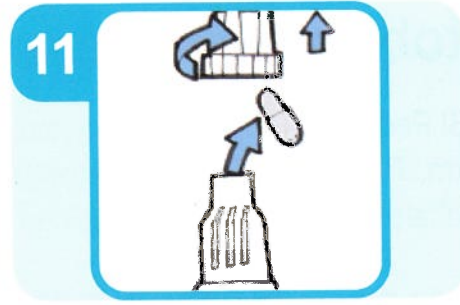
9 Remove inhaler from mouth, and hold breath for a count of approximately 5 seconds, then exhale normally away from the inhaler.



After a few normal breaths, perform a second inhalation from the same capsule, repeating steps 7, 8 and 9.

If the capsule is punctured but still contains some powder:

place it back into the chamber with the punctured side of the capsule inserted first, replace the mouthpiece and take another two inhalations from the capsule (repeat step 5, then steps 7 to 11). Re-inspect capsule.



Unscrew mouthpiece and remove the capsule from the chamber.

If the capsule appears to be unpunctured:

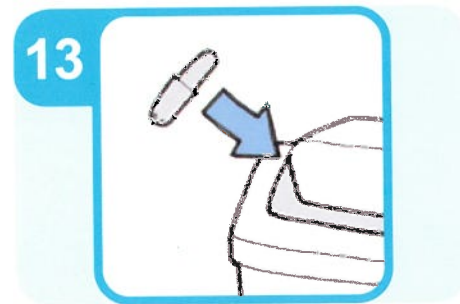
place it back into the chamber, replace the mouthpiece, press the button firmly as far as it goes and take another two inhalations from the capsule (repeat steps 5 to 11).



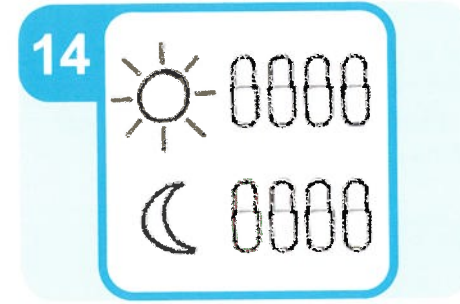
Inspect the used capsule. It should appear punctured and empty.

If the capsule is still full and appears to be unpunctured:

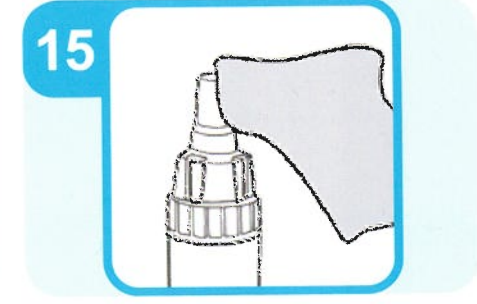
replace the inhaler with the reserve inhaler and try again (repeat steps 2, 3, and 5 to 11).



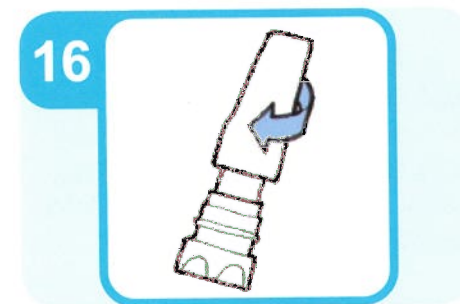
Discard the empty capsule.



Repeat, starting at step 4, for the remaining 3 capsules of the dose.

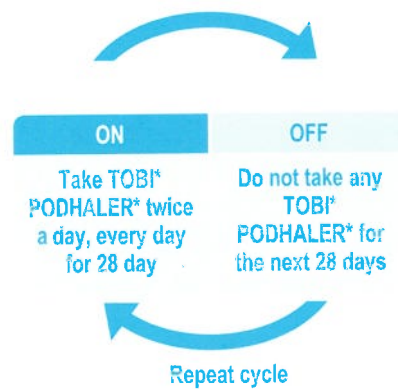


Replace the mouthpiece and screw it on firmly until it stops. When the full dose (4 capsules) has been inhaled, wipe the mouthpiece with a clean, dry cloth.



Place inhaler back in the storage case and close tightly. The inhaler should never be washed with water.

Discard this Podhaler after 7 days of use.



It is important that you keep using the medication twice each day during your 28 days on treatment and that you keep to the 28-day on and 28-day off cycle. Take your medication exactly how your doctor has instructed and do not stop taking it, unless you are told to. Ask your doctor if you have any questions on your treatment.

More information

Information on medicines is updated from time to time and may have an importance for you. For the most current information about this product, ask your pharmacist or doctor for a copy of the latest Consumer Medicine Information (CMI) or download a copy from: www.novartis.com.au/products/consumer.shtml

Sponsor
 TOBI is supplied by:
 Novartis Pharmaceuticals Australia Pty Limited
 ABN 18 004 244 160
 54 Waterloo Road North Ryde NSW 2113 Telephone (02) 9805 3555
 © registered trademark of Novartis.